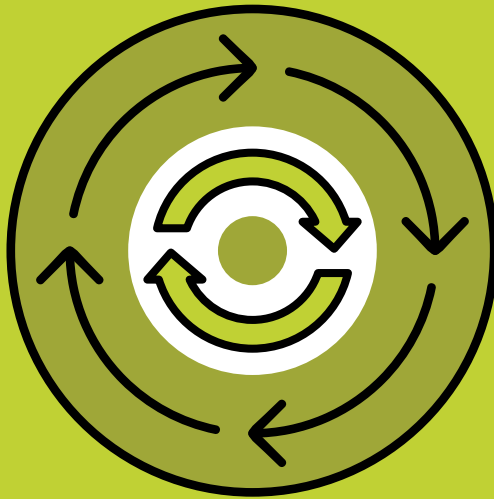


LET'S MAKE THE CIRCLE BIGGER.



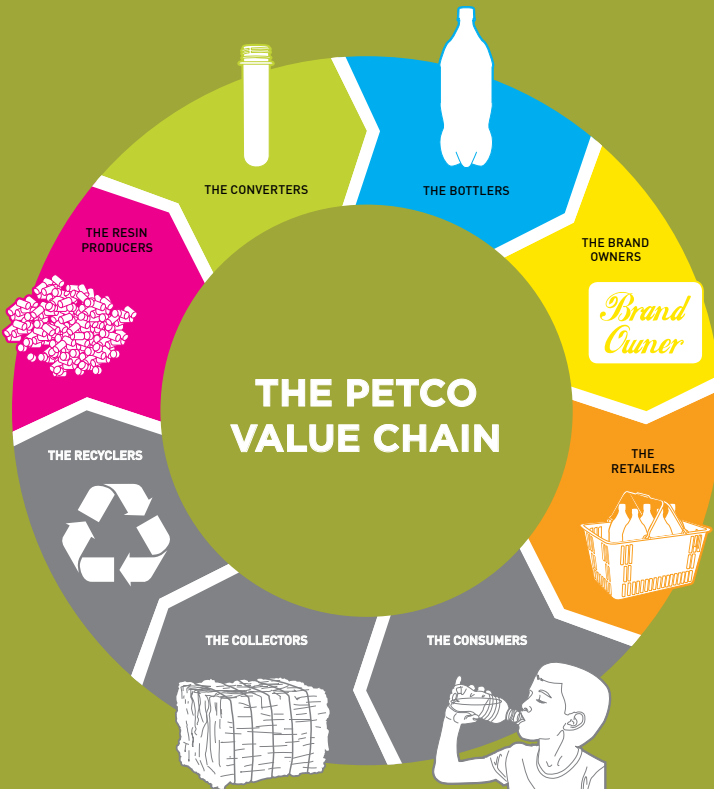
petco 
PET plastic recycling south africa

LET'S MAKE THE CIRCLE BIGGER.

More than just a buzzword, the Circular Economy should be a way of life. At PETCO, it's what we have been striving towards for many years. It goes beyond recycling PET, beyond simply designing for better end-of-life recovery.

A Circular Economy aims to maximise value and eliminate waste by improving the design of materials, products, and business models, and minimising the use of raw materials and energy needed through restorative systems.

We're a small part of a much larger global picture. By becoming a part of the PETCO family of associate members you can help make an enormous impact contributing as well as drawing inspiration from likeminded members.

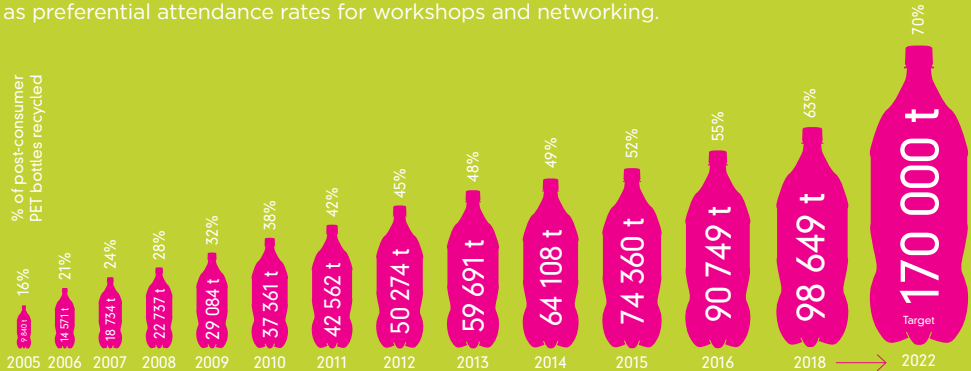


ARE YOU WITH US?

PETCO is South Africa's national industry body, and is accountable for managing the PET plastic industry's Extended Producer Responsibility (EPR). Started in 2004, our mission is to grow the collection and recycling of PET bottles, after consumer use, on behalf of our members.

Our members are either Voting Members or Associate Members. Voting members pay a fee on the virgin material they employ, per tonne, or contribute financially to PETCO. This affords them voting rights and shares in PETCO.

Organisations who subscribe to the principles of PETCO and share the same future outlook as our Voting Members may become Associate Members. Although they don't enjoy voting rights, they're still offered many other benefits such as preferential attendance rates for workshops and networking.



GROWTH OF PET BOTTLE RECYCLING IN SOUTH AFRICA

WHAT DOES PETCO DO?

PETCO is committed to reducing the impact of PET on the environment and to continually increasing recycling rates. To meet our objectives, we work hard in the following areas:

We contract with and finance PET recyclers who buy baled bottles, process them and manufacture feedstock for sale into the manufacturing sector.

Through marketing awareness – in print publications, broadcast and digital media – as well as at shows, workshops and conferences and through continuously updated promotional material we convey PETCO's unique recycling message.

Training, skills development and joint venture projects (including those with municipalities) help us grow and expand collection across the country and help us facilitate the integration of the informal economy into the formal one.

We encourage consumers to participate in kerbside projects (where these exist), and support community projects and drop-off sites that actively recover their post-consumer PET plastic for recycling.

THE PETCO ASSOCIATE MEMBER PROGRAMME AND ITS BENEFITS.

Our Associate Membership programme involves a diverse group of individuals and companies. It enables anyone from a not-for-profit organisation to a school, from a collector to a manufacturer, to become a member of PETCO. What all of our members have in common is a strong belief in supporting recycling.

As an Associate Member, you can:

- Help shape the future of PET packaging.
 - Participate in setting the objectives for PETCO by attending AGMs and being represented on committees or task teams that the Board may establish.
 - Influence national environmental authorities.
 - Use PETCO as an information resource.
 - Increase your company's visibility and credibility as being environmentally conscientious.
-



COMMITTED MEMBER



petco

www.petco.co.za

Associate Member Benefits include the following:

By joining PETCO as an associate member, you become a part of the PET recycling network and will have the opportunity to shape the future of PET packaging.

- **Integrity** – The PETCO Membership Logo on marketing material provides credibility of your organisation as being environmentally conscientious;
- **Information** – The bi-monthly PETRefresh e-newsletter & ad hoc newswashes provide you with access to market intelligence, research results and PET recycling trends;
- **Support** – Regular dialogue opportunities with PETCO will ensure your interests in PET recycling are supported;
- **Networking** – Regular PETCO events will afford you the opportunity to connect with other recycling and waste management industry players and practitioners.
- **Value** – Preferential attendance to PETCO workshops, networking activities and events.

To join the membership program, visit www.petco.co.za or email us on info@petco.co.za.



Supporter of Plastics | SA
Supporter of Packaging | SA



1isPET 0860 147 738
www.petco.co.za